



ANDHRA PRADESH POWER GENERATION CORPORATION LIMITED
ABSTRACT

APGENCO – Estt. – Employee pattern and work allocation for MCL, Talcher and SCCL under the control of Chief Engineer/Generation/Vidyut Soudha - Diversion of Posts – Orders Issued – Reg.

G.O.O.No.284 /CGM(ADM, IS & ERP)/2019

Dt: 23.01.2020

Read the following:

- 1) Lr.No.CEG/SE(C&FO)/EE(Coal)/F.MISC/D.No.16/2020, Dt. 21.01.2020.
- 2) U.O.No.CGM(ADM, IS & ERP)/DS(ADM)/AS(ADM)/PO-C/493/2019, Dt. 23.01.2020

ORDER:

In the reference 1st read above, Chief Engineer/Generation/VS, has submitted a proposal regarding organization charts and work allocation in respect of staff posted/being posted at MCL, Talcher and SCCL, for coordinating with Mines officials, CIMFER, washery operators, Railway authorities and logistic agencies to ensure improved coal supplies to APGENCO power plants duly placing the services of staff at MCL, Talcher and SCCL under his control.

2. After careful consideration, the following employee pattern has been framed and kept under the control of Chief Engineer/Generation/Vidyut Soudha for utilization of their services at MCL and SCCL duly diverting the posts from various Thermal/Hydel stations and corporate office.

Sl. No	Name of the Post	Nos	Station from which post is diverted
Employee Pattern for MCL/Talcher			
1	Superintending Engineer	1	Superintending Engineer/Dr.NTTPS
2	Executive Engineer	1	EE/EI, /Dr.NTTPS (along with the incumbent)
3	Deputy Executive Engineer	2	Vacant Dy.EE Mech, Dr.NTTPS & Dy.EE EI. Dr.NTTPS (along with the incumbent)
4	Assistant Executive Engineer	4	AEE/EI, O&M. Dr.NTTPS (along with incumbent)
			AEE/EI, USHES (along with incumbent)
			AEE/EI, O&M, Dr.NTTPS(along with incumbent)
			AEE/EI, O&M, Dr.NTTPS (along with incumbent)
5	Assistant Executive Chemist	1	Dr.NTTPS (along with incumbent)
Employee Pattern for SCCL			
1	Executive Engineer/ Coal/Yellandu	1	EE/EI, O&M, RTPP (along with incumbent)
2	Deputy Executive Engineer/ Coal/Manchiryala	1	Vacant Dy.EE/EI/Mech, RTPP
3	Assistant Executive Engineer/ Coal/Ramagundam & Manauguru	2	AEE/EI, O/oCE/HPC/VS (along with incumbent)
			AE/Mechl, O&M, RTPP (along with incumbent)

3. The work allocation for employee pattern as mentioned at para (2), is as follows.

(a) Work allocation for Engineers /Chemist at MCL, Talcher :-

Sl. No.	Designation	Works
1	Superintending Engineer / Coal /MCL, Talcher	<ul style="list-style-type: none"> i. Coordination of all the works related to MCL, Railways, Washeries, Ports & quality. ii. Issuance of Notices to Supervisory Contractors, Washery Operators, transport contractors and third party sampling agency etc., for proper execution of the contracts as per the terms and conditions. iii. Attending meetings with MCL, Railway authorities and Odisha secretariat etc, iv. Updating various coal issues to APGENCO Headquarters, Plants on regular basis.
2	Executive Engineer / Coal / MCL, Talcher	<ul style="list-style-type: none"> i. Supervision of all the following works and quality issues. ii. Attending meetings with MCL, Railway authorities and Odisha secretariat etc.,.
3	Dy. Executive Engineer – 1 / Coal /MCL, Talcher	<ul style="list-style-type: none"> i. Looking after all coal related works with MCL& Railways and quality issues.
4	Assistant Executive Engineer – 1/Coal / MCL, Talcher	<ul style="list-style-type: none"> i. Appraising and resolving coal related issues with MCL authorities on regular basis. ii. Coordinate with Supervisory contactors and Monitoring rake loading on daily basis. iii. Ensuring maximum realization of FSA quantity. iv. Witnessing collection, preparation of coal samples & collection and scrutiny of results done by CIMFR. v. Ensuring collection of coal bills from all areas of MCL, Talcher&Ib Valley.
5	Assistant Executive Engineer – 2 /Coal / MCL, Talcher	<ul style="list-style-type: none"> i. Resolving claims, commercial & operational issues of Railways i.e. East Coast Railways / Bhubaneswar, South East central Railways/Bilaspur and South Eastern Railways/Kolkata. ii. Resolving issues, if any regarding rake movement and freight payment with ARM / Talcher, CGSR/ Talcher. Witnessing the in-motion weighbridge calibrations at Talcher coal fields &Ib Valley. iii. Ensuring preparation and issue of e-way bills for BZA & RTPP regularly. iv. Ensuring the allotment of rakes as per EDRM programme sanctioned. v. Ensuring the carrying out the repairs of wagons by supervision contractors. vi. Any other works related to Railways & rake movement.
6	Dy. Executive Engineer – 2 / Coal / MCL, Talcher	Looking after the works related to all washeries & Ports and quality issues.
7	Assistant Executive Engineer – 3 /Coal / MCL, Talcher	Looking after the following works related to Spectrum washeries (APGENCO & APPDCL) and Ports issues

8	Assistant Executive Engineer – 4 /Coal / MCL, Talcher	Looking after the following works related to washeries of APPDCL (M/s Global & Aryan) and Ports issues
		<ul style="list-style-type: none"> i. Coordinate with Transport / washery contactors and monitoring loading of raw coal at various mines of MCL on daily basis. ii. Witness the collection & preparation of coal samples done by CIMFR / IIA and scrutinizing the results. iii. Ensure lifting of Delivery Order quantity of Coal, without any lapse. iv. Supervising the washeries for proper washing of raw coal, proper stocking of washed coal and rejects in the washery premises. v. Coordinate with Transport / washery contactors and monitoring loading of washed coal on daily basis. vi. Witness the collection & preparation of reject coal samples done at washeries and scrutinize the results. vii. Ensuring collection and dispatch of washed samples to respective Stations regularly. viii. Submission of mining returns to M.O/ PARADEEP regularly and coordinate all mining issues with Director of Mines/Bhubaneswar and Dy. Director of mines, Jajpur road. ix. Coordinate with Traffic Manager/Paradeep port, Chief Engineer/MCHP/PPT for ship movement at Paradeep Port Trust.
9	Chemist / MCL/Talcher	<ul style="list-style-type: none"> i. Witness the collection& preparation of Raw coal samples done by CIMFR / IIA. ii. Sampling of reject coal at washeries. iii. Joint analysis of rejects at washeries. iv. Participating in joint analysis of challenged samples in CIMFR laboratories.

(b) Work allocation for Engineers at SCCL.

- i. Coordination with Supervisory contactors and monitoring rake loading at various SCCL sidings.
- ii. Witnessing collection& preparation of coal samples done by CIMFR.
- iii. Witnessing Weigh bridge calibration works at various SCCL sidings.
- iv. Ensuring collection of coal bills from all areas of SCCL.
- v. Attending meetings with SCCL and Railway headquarters.
- vi. Updating various coal issues to APGENCO Headquarters, Plants on regular basis.

Sl. No.	Designation	Works
1	Executive Engineer / Coal / SCCL/Yellandu	Headquarters at Yellandu area. Supervise all the above works in coordination with the following staff.
2	Dy. Executive Engineer / Coal /SCCL Manchiryala	Headquarters at Manchiryala. Supervise all the above works in coordination with the following staff.
3	Assistant Executive Engineer / Coal /SCCL/ Ramagundam	Headquarters at Ramagundam and looking after the above works at sidings of Godavarikhani, Srirampur, Ramagundam, Rebbana, Mandamarri, Manchiryala, Goleti and other nearby sidings.
4	Assistant Executive Engineer / Coal / SCCL/Manuguru.	Headquarters at Manuguru and looking after the above works at sidings of Manuguru, Rudrampur, Tadikalapudi, Yellandu and other nearby sidings.

:4:

4. The concerned station heads and Chief Engineer/HPC &HP/VS/Vijayawada are requested to take necessary action accordingly.

5. The Chief Engineer/Generation/VS/Vijayawada is requested to allocate the works among the persons posted under his control as per the organization chart enclosed.

Encl: - Organization Charts

**B. SREEDHAR
MANAGING DIRECTOR**

To:

The Chief Engineer/ Generation, Vidyut Soudha, Gunadala, Vijayawada.

The Chief Engineer/HPC & HP, Vidyut Soudha, Gunadala, Vijayawada.

The Chief Engineer/O&M/Dr.NTTPS/Ibrahimpattanam/Krishna Dist.

The Chief Engineer/O&M/RTPP/VV Reddy Nagar/YSR Dist.

The Chief Engineer/O&M/LSHES/Mothugudem.

Copy to:

SE(Techl) to MD/APGENCO//SAO to Director (Finance & Comml)//Dy.EE (T) to Director (Thermal)// Dy.EE (T) to Director (Hydel)// Dy.EE (T) to Director (HR & IR)//PA to CGM (ADM, IS & ERP)//GM (ERP& IT)//Pay Officer//AO (CPR)//DS (Adm)//AS(Adm)/VS/VJA.

C.No.CGM(Adm, IS & ERP)/EE(MPP)/Dy.EE(MPP-I)/D.No. 01/2020.

//FORWARDED::BY ORDER//

EXECUTIVE ENGINEER(MPP)



ANDHRA PRADESH POWER GENERATION CORPORATION LIMITED
ABSTRACT

APGENCO – Estt. – Employee pattern and work allocation for MCL, Talcher and SCCL under the control of Chief Engineer/Generation/Vidyut Soudha - Diversion of Posts – Orders Issued – Reg.

G.O.O.No.284 /CGM(ADM, IS & ERP)/2019

Dt: 23.01.2020

Read the following:

- 1) Lr.No.CEG/SE(C&FO)/EE(Coal)/F.MISC/D.No.16/2020, Dt. 21.01.2020.
- 2) U.O.No.CGM(ADM, IS & ERP)/DS(ADM)/AS(ADM)/PO-C/493/2019, Dt. 23.01.2020

ORDER:

In the reference 1st read above, Chief Engineer/Generation/VS, has submitted a proposal regarding organization charts and work allocation in respect of staff posted/being posted at MCL, Talcher and SCCL, for coordinating with Mines officials, CIMFER, washery operators, Railway authorities and logistic agencies to ensure improved coal supplies to APGENCO power plants duly placing the services of staff at MCL, Talcher and SCCL under his control.

2. After careful consideration, the following employee pattern has been framed and kept under the control of Chief Engineer/Generation/Vidyut Soudha for utilization of their services at MCL and SCCL duly diverting the posts from various Thermal/Hydel stations and corporate office.

Sl. No	Name of the Post	Nos	Station from which post is diverted
Employee Pattern for MCL/Talcher			
1	Superintending Engineer	1	Superintending Engineer/Dr.NTTPS
2	Executive Engineer	1	EE/EI, /Dr.NTTPS (along with the incumbent)
3	Deputy Executive Engineer	2	Vacant Dy.EE Mech, Dr.NTTPS & Dy.EE EI. Dr.NTTPS (along with the incumbent)
4	Assistant Executive Engineer	4	AEE/EI, O&M. Dr.NTTPS (along with incumbent)
			AEE/EI, USHES (along with incumbent)
			AEE/EI, O&M, Dr.NTTPS(along with incumbent)
			AEE/EI, O&M, Dr.NTTPS (along with incumbent)
5	Assistant Executive Chemist	1	Dr.NTTPS (along with incumbent)
Employee Pattern for SCCL			
1	Executive Engineer/ Coal/Yellandu	1	EE/EI, O&M, RTPP (along with incumbent)
2	Deputy Executive Engineer/ Coal/Manchiryala	1	Vacant Dy.EE/EI/Mech, RTPP
3	Assistant Executive Engineer/ Coal/Ramagundam & Manauguru	2	AEE/EI, O/oCE/HPC/VS (along with incumbent) AE/MechI, O&M, RTPP (along with incumbent)

3. The work allocation for employee pattern as mentioned at para (2), is as follows.

(a) Work allocation for Engineers /Chemist at MCL, Talcher :-

Sl. No.	Designation	Works
1	Superintending Engineer / Coal /MCL, Talcher	<ul style="list-style-type: none"> i. Coordination of all the works related to MCL, Railways, Washeries, Ports & quality. ii. Issuance of Notices to Supervisory Contractors, Washery Operators, transport contractors and third party sampling agency etc., for proper execution of the contracts as per the terms and conditions. iii. Attending meetings with MCL, Railway authorities and Odisha secretariat etc, iv. Updating various coal issues to APGENCO Headquarters, Plants on regular basis.
2	Executive Engineer / Coal / MCL, Talcher	<ul style="list-style-type: none"> i. Supervision of all the following works and quality issues. ii. Attending meetings with MCL, Railway authorities and Odisha secretariat etc.,
3	Dy. Executive Engineer – 1 / Coal /MCL, Talcher	<ul style="list-style-type: none"> i. Looking after all coal related works with MCL& Railways and quality issues.
4	Assistant Executive Engineer – 1/Coal / MCL, Talcher	<ul style="list-style-type: none"> i. Appraising and resolving coal related issues with MCL authorities on regular basis. ii. Coordinate with Supervisory contactors and Monitoring rake loading on daily basis. iii. Ensuring maximum realization of FSA quantity. iv. Witnessing collection, preparation of coal samples & collection and scrutiny of results done by CIMFR. v. Ensuring collection of coal bills from all areas of MCL, Talcher&Ib Valley.
5	Assistant Executive Engineer – 2 /Coal / MCL, Talcher	<ul style="list-style-type: none"> i. Resolving claims, commercial & operational issues of Railways i.e. East Coast Railways / Bhubaneswar, South East central Railways/Bilaspur and South Eastern Railways/Kolkata. ii. Resolving issues, if any regarding rake movement and freight payment with ARM / Talcher, CGSR/ Talcher. Witnessing the in-motion weighbridge calibrations at Talcher coal fields &Ib Valley. iii. Ensuring preparation and issue of e-way bills for BZA & RTPP regularly. iv. Ensuring the allotment of rakes as per EDRM programme sanctioned. v. Ensuring the carrying out the repairs of wagons by supervision contractors. vi. Any other works related to Railways & rake movement.
6	Dy. Executive Engineer – 2 / Coal / MCL, Talcher	Looking after the works related to all washeries & Ports and quality issues.
7	Assistant Executive Engineer – 3 /Coal / MCL, Talcher	Looking after the following works related to Spectrum washeries (APGENCO & APPDCL) and Ports issues

8	Assistant Executive Engineer – 4 /Coal / MCL, Talcher	Looking after the following works related to washeries of APPDCL (M/s Global & Aryan) and Ports issues
		<ul style="list-style-type: none"> i. Coordinate with Transport / washery contactors and monitoring loading of raw coal at various mines of MCL on daily basis. ii. Witness the collection & preparation of coal samples done by CIMFR / IIA and scrutinizing the results. iii. Ensure lifting of Delivery Order quantity of Coal, without any lapse. iv. Supervising the washeries for proper washing of raw coal, proper stocking of washed coal and rejects in the washery premises. v. Coordinate with Transport / washery contactors and monitoring loading of washed coal on daily basis. vi. Witness the collection & preparation of reject coal samples done at washeries and scrutinize the results. vii. Ensuring collection and dispatch of washed samples to respective Stations regularly. viii. Submission of mining returns to M.O/ PARADEEP regularly and coordinate all mining issues with Director of Mines/Bhubaneswar and Dy. Director of mines, Jajpur road. ix. Coordinate with Traffic Manager/Paradeep port, Chief Engineer/MCHP/PPT for ship movement at Paradeep Port Trust.
9	Chemist / MCL/Talcher	<ul style="list-style-type: none"> i. Witness the collection& preparation of Raw coal samples done by CIMFR / IIA. ii. Sampling of reject coal at washeries. iii. Joint analysis of rejects at washeries. iv. Participating in joint analysis of challenged samples in CIMFR laboratories.

(b) Work allocation for Engineers at SCCL.

- i. Coordination with Supervisory contactors and monitoring rake loading at various SCCL sidings.
- ii. Witnessing collection& preparation of coal samples done by CIMFR.
- iii. Witnessing Weigh bridge calibration works at various SCCL sidings.
- iv. Ensuring collection of coal bills from all areas of SCCL.
- v. Attending meetings with SCCL and Railway headquarters.
- vi. Updating various coal issues to APGENCO Headquarters, Plants on regular basis.

Sl. No.	Designation	Works
1	Executive Engineer / Coal / SCCL/Yellandu	Headquarters at Yellandu area. Supervise all the above works in coordination with the following staff.
2	Dy. Executive Engineer / Coal /SCCL Manchiryala	Headquarters at Manchiryala. Supervise all the above works in coordination with the following staff.
3	Assistant Executive Engineer / Coal /SCCL/ Ramagundam	Headquarters at Ramagundam and looking after the above works at sidings of Godavarikhani, Srirampur, Ramagundam, Rebbana, Mandamarri, Manchiryala, Goleti and other nearby sidings.
4	Assistant Executive Engineer / Coal / SCCL/Manuguru.	Headquarters at Manuguru and looking after the above works at sidings of Manuguru, Rudrampur, Tadikalapudi, Yellandu and other nearby sidings.

:4:

4. The concened station heads and Chief Engineer/HPC &HP/VS/Vijayawada are requested to take necessary action accordingly.
5. The Chief Engineer/Generation/VS/Vijayawada is requested to allocate the works among the persons posted under his control as per the organization chart enclosed.

Encl: - Organization Charts

**B. SREEDHAR
MANAGING DIRECTOR**

To:


The Chief Engineer/ Generation, Vidyut Soudha, Gunadala, Vijayawada.
The Chief Engineer/HPC & HP, Vidyut Soudha, Gunadala, Vijayawada.
The Chief Engineer/O&M/Dr.NTTPS/Ibrahimpattanam/Krishna Dist.
The Chief Engineer/O&M/RTPP/VV Reddy Nagar/YSR Dist.
The Chief Engineer/O&M/LSHES/Mothugudem.

Copy to:

SE(Techl) to MD/APGENCO//SAO to Director (Finance & CommI)//Dy.EE (T) to Director (Thermal)// Dy.EE (T) to Director (Hydel)// Dy.EE (T) to Director (HR & IR)//PA to CGM (ADM, IS & ERP)//GM (ERP& IT)//Pay Officer//AO (CPR)//DS (Adm)//AS(Adm)/VS/VJA.

C.No.CGM(Adm, IS & ERP)/EE(MPP)/Dy.EE(MPP-1)/D.No. 01/2020.

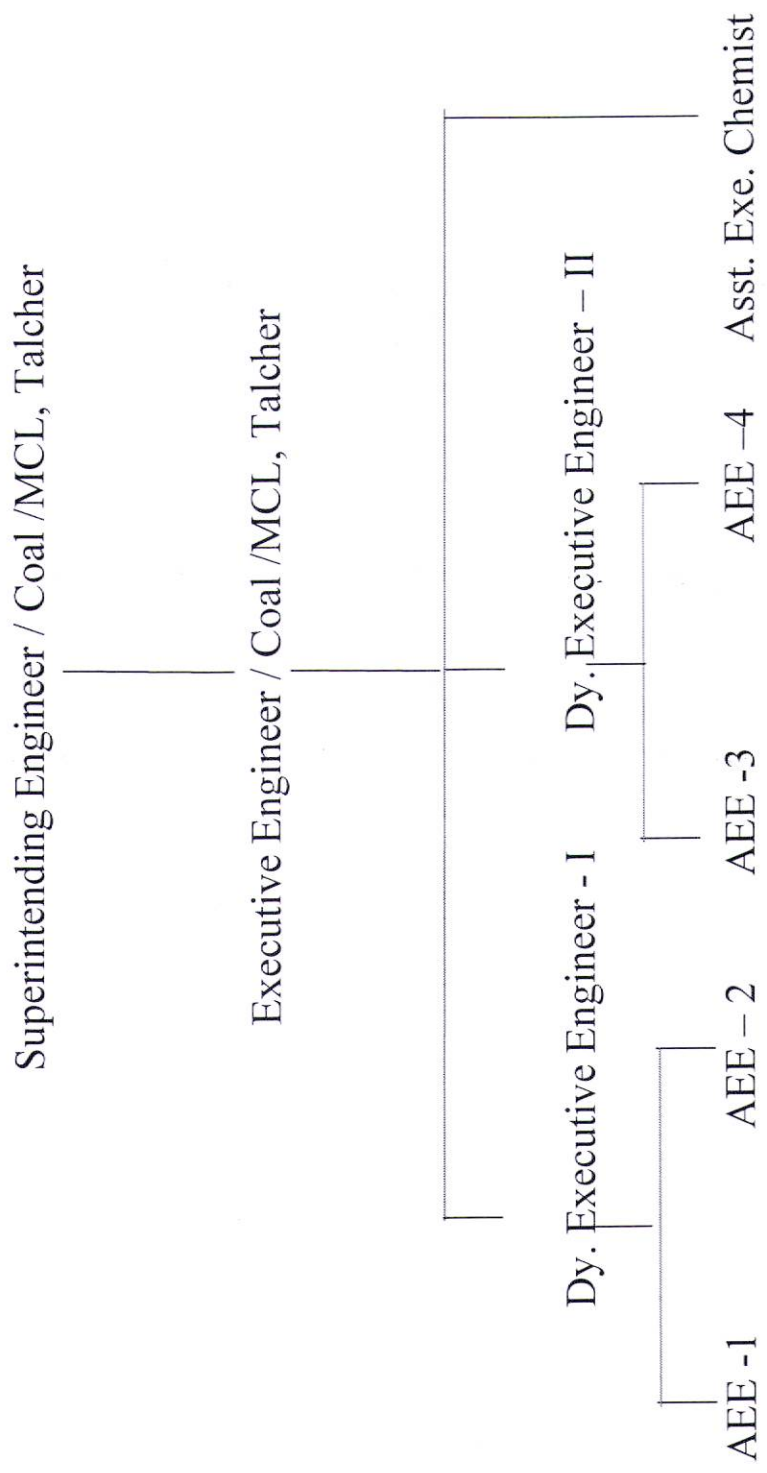
//FORWARDED::BY ORDER//


EXECUTIVE ENGINEER (MPP)

Enclosure to G.O.No.284 /CGM(ADM, IS & ERP)/2019 Dt: 23.01.2020

APGENCO

ORGANIZATION CHART AT MCL, TALCHER



Enclosure to G.O.O.No.284 /CGM(ADM, IS & ERP)/2019 Dt: 23.01.2020

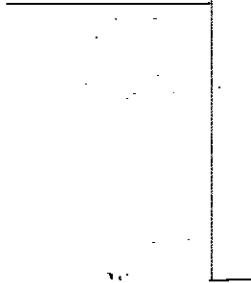
APGENCO

ORGANIZATION CHART AT SCCL

Executive Engineer / Coal / SCCL, Yellandu



Dy. Executive Engineer / Coal / Manchiryala



AEE / Coal / Ramagundam

AEE / Coal / Manuguru.